

NATSON BATTY
ARCHITECTS



2021 - 2022

FUTURE BUILT

Industrial
and Distribution



A nationally recognised, future-focused practice offering award-winning, cross-sector building design services.

We are Watson Batty Architects

With studios in Leeds and Loughborough, Watson Batty Architects has more than 45 years' experience creating many types of buildings across a diverse range of sectors.

We undertake projects throughout the UK, ranging from commercial refurbishments to multi-million-pound new-build projects and ground-breaking regeneration schemes. Our cross-sector experience includes the areas of Learning, Retail, Commercial, Living, Regeneration, Industrial, Sport & Leisure, Transport and Faith-related projects.

Our core architecture business is supported by specialist in-house services, including Masterplanning, Access Consulting, Listed Building Advice, Graphics & Visualisation, Party Wall Surveying, Health & Safety Management, Principal Designer, Interiors, and Project Management.

Today, our team comprises over 30 architects, interior designers, technicians and masterplanners. Our management structure consists of four Directors, supported by two Regional Directors, an Associate Director and three Associates who manage each sector, lead the design teams and monitor staff resource.

With a strong and respected brand, a financially robust business, a healthy project pipeline, and a strategy to invest in exceptional talent, we are a company that is built for the future.

Our Approach



Peter White
Managing Director

Putting our clients first

Reliable, professional and knowledgeable, Watson Batty Architects are a trusted design practice because we take time to understand our clients and their specific needs. Our motivation as designers is to interpret and articulate the client's vision, turn it into outstanding architecture and add value at every opportunity.

Creating places for people

Whatever purpose a building may serve and within whatever sector it falls, our ethos is to place users at the heart of the design process and create the very best environments that nurture and inspire.

Responding to the Climate Crisis

Sustainability sits at the very heart of everything we do; it is an integral part of good architecture, not a concept to be bolted on at the end. With over 40% of the UK's carbon footprint attributed to the built environment, we recognise our responsibility to help reduce the causes of our climate emergency.

Championing change and innovation

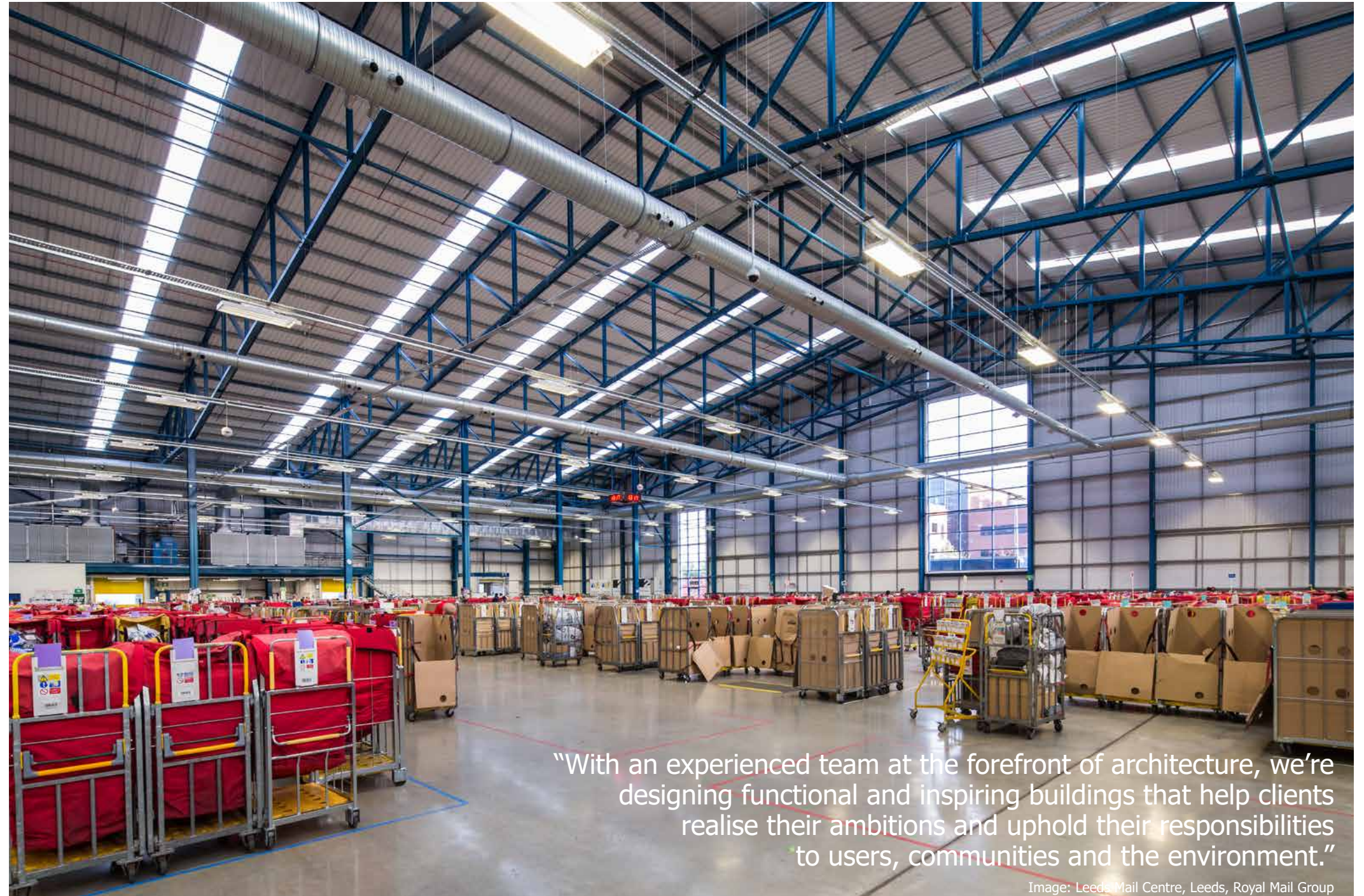
The building industry is progressing fast, and we're moving with it. We're embracing Modern Methods of Construction, which use offsite building techniques and digital technologies to minimise site construction, reduce waste and energy, and increase project efficiency. And we utilise the latest Building Information Modelling technology, enabling us to lessen cost and risk by sharing information about design, construction and operation in a virtual form.

Employing the best talent

Our highly qualified and experienced architects and support teams are committed to providing clients with exceptional service combined with the highest levels of design and technical expertise.

Harnessing cross-sector knowledge

We provide a truly multi-disciplinary service for a diverse client base operating in a range of sectors. With over 45 years' experience designing and working within various environments, we have a successful track record in the design, delivery and completion of facilities that integrate a variety of uses.



"With an experienced team at the forefront of architecture, we're designing functional and inspiring buildings that help clients realise their ambitions and uphold their responsibilities to users, communities and the environment."

Image: Leeds Mail Centre, Leeds, Royal Mail Group

Our Foundations



We’ve built our valued reputation by upholding our guiding principles and core values.

Our four guiding principles ensure we never lose sight of what makes us a successful and respected practice that provides outstanding service to clients:

Providing measurable value

We create spaces that work. It’s not enough for architecture to have a positive visual impact. We pride ourselves on offering cost-effective, feasible design solutions that are buildable, functional and well-detailed.

Reliable and professional

Our clients don’t just know us, they trust us. Our broad experience and our unbending commitment to deliver are two reasons why we have client relationships that span three decades.

Memorable, meaningful and motivating, our **core values** are the fundamental qualities of our business and brand that we live and breathe.

Great to work with

We work openly and with energy. We believe the design process should be collaborative and enjoyable. Listening and understanding always come first. And as a project progresses, free-flowing communication remains central to its success.

Future-focused

We never stand still. Technologies and processes in our industry are constantly evolving and improving, and we readily adapt to offer our clients the best possible service. The need to push the boundaries of our capability is central to our ethos.

“The team at Watson Batty Architects have been excellent. As a client, I feel that they have fully understood and met the brief, have a grasp of our priorities, expectations and limitations. It is difficult to assess some of the points above as we are so early in the process, but I am confident that going forward Watson Batty will not disappoint.”

Laura Whitehead, Project Manager, Leeds City Council

Sector Analysis



Ben Pickersgill
Sector Lead

With over 40 years’ experience designing and working with industrial and commercial environments, our knowledge in this sector is second to none. We understand how to get the most out of the design process and appreciate the complexities of managing the procurement process. Reliable, Professional, Knowledgeable, Watson Batty Architects are a trusted design practice in the Industrial sector.

Founded in Leeds in 1976, Watson Batty Architects is an established design consultancy with many great buildings and accreditations to its name. Our ethos is to place users at the heart of the design process to create the very best environments, whatever purpose the building may serve.

Delivering successful projects within the Industrial sector for nearly 40 years, Watson Batty Architects have a track record second to none.

Working with a range of developers and end user clients, we have experience of estate planning as well as new build factories across the sector, including distribution, logistics, warehousing and processing facilities.

Watson Batty Architects and our team of qualified technical staff have a practical approach and are capable of dealing with any situation.

The team have developed a keen understanding of the requirements of such buildings as well as a detailed knowledge of the processes that are contained within.

From effective site layout designs to state of the art energy efficient design solutions we can call on a wealth of knowledge in relation to the design and specifications of the buildings and associated external areas. We offer an in-depth understanding of the key requirements for all aspects of these building types.

Innovative solutions form a key element of what Watson Batty Architects do. We design and help create places for people. With over 40 Architects, Designers, Technicians and Masterplanners, we work across the UK from our studios in Leeds and Loughborough.

We also explore other benefits and technological advances which we implement as a practice in our projects enabling us to design smartly and efficiently but most of all to design better buildings for our clients. We will explore Sustainable Design, Strategic Masterplanning and Building Information Modeling.

Working on Projects Throughout the **UK**

4.1m sq.ft New and Refurbished Floor Space for Industrial Clients

40 + Years of Project Success

Long-Standing Client Relationships

Delivered over **£500m** in Construction Projects

Won **3** Green Apple Environment Awards

More than **25** Projects with **Breem** Very Good or Higher

Won **5** Regional Health & Safety Awards

Over **35** Skilled Team Members

Key Team Members

Watson Batty Architects is a partnership of talented Architects, Masterplanners, Interior Designers, Technicians and a skilled support team. We have specialists across numerous sectors and hold expertise in building conservation, project management, and sustainable design.



Ben Pickersgill
Architect & Associate Director



Sean Nottingham
Architectural Technologist



Martin Bradley
Architect



Peter White
Architect & Managing Board Director



Catherine Blain
H&S Manager & Associate



Gemma Bottomley
Architect & Interiors



Matthew Ing
Architectural Technologist



Steven Horsman
Architectural Technologist & Associate



Kamila Kudlata
Architectural Assistant



David Coe
Architectural Technologist



Philip Guest
Architectural Technologist



Image: Medway Mail Centre, Kent, Royal Mail Group Property

“They work well as lead consultant or as a part of a design team; their collaborative approach has helped to ensure projects are maintained to the various targets on programme and cost.”

Alan Smith Hill, Head of Infrastructure Estate, Royal Mail Group Property

Logistics

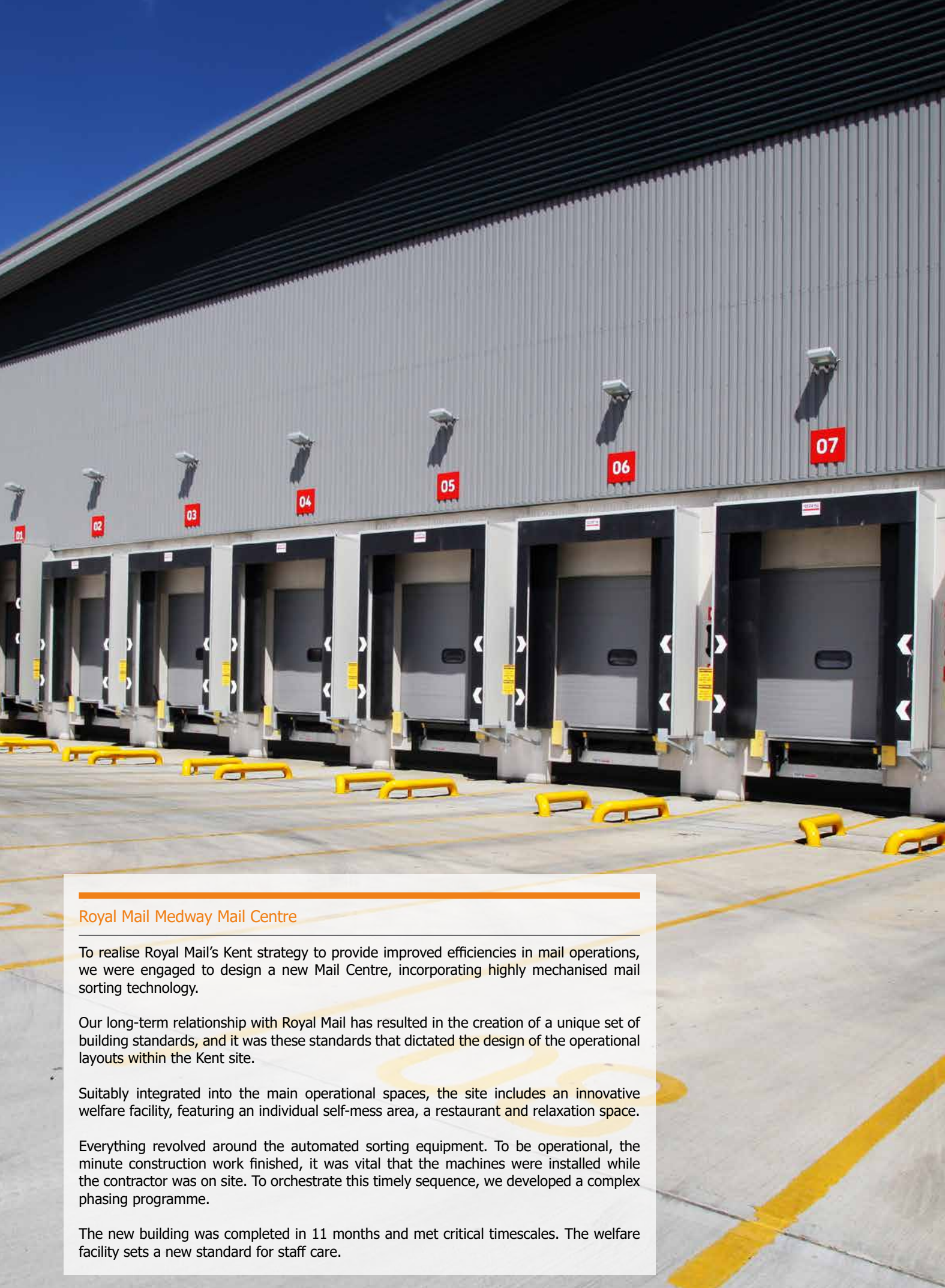
A deep knowledge of a burgeoning industry

From one-off new-build factories to the planning of vast estates, we have extensive experience in designing for distribution, logistics, warehousing and processing. Our clients in this field are both developers and end-users.

The processes that happen inside these facilities and the functions of their external areas are complex and precise. From creating effective site layouts to state-of-the-art, energy-efficient solutions, our sector-specialist architects and their supporting technical staff understand every demand and nuance.

It's certainly an area that requires a firmly practical approach, but it also demands an ability to deal with the uncommon. Developing innovative solutions for unique situations is often our answer. In this growing industry that's now part of our national infrastructure, technology is constantly changing the landscape. Recently, our experience has expanded to cover coordination with robotic automation suppliers, allowing our clients to operate at the cutting-edge of the supply chain.

Image: Industrial & Distribution Hub, England



Royal Mail Medway Mail Centre

To realise Royal Mail's Kent strategy to provide improved efficiencies in mail operations, we were engaged to design a new Mail Centre, incorporating highly mechanised mail sorting technology.

Our long-term relationship with Royal Mail has resulted in the creation of a unique set of building standards, and it was these standards that dictated the design of the operational layouts within the Kent site.

Suitably integrated into the main operational spaces, the site includes an innovative welfare facility, featuring an individual self-mess area, a restaurant and relaxation space.

Everything revolved around the automated sorting equipment. To be operational, the minute construction work finished, it was vital that the machines were installed while the contractor was on site. To orchestrate this timely sequence, we developed a complex phasing programme.

The new building was completed in 11 months and met critical timescales. The welfare facility sets a new standard for staff care.



This page and facing: Royal Mail Medway Mail Centre, Kent, Royal Mail Property Group.



“Very client and target focused, adding great value to both programmes and individual projects... trustworthy, reliable and valuable.”

Mark Brady, Field Operations Manager/Construction Manager, Royal Mail Group

Royal Mail, Leeds Mail Centre

Leeds Mail Centre is part of the North East Mail Centre Strategy and is a key part of Royal Mail’s consolidation programme. Six of the region’s Mail Centres were merged into three Mail Centre sites at Leeds, Tyneside and Sheffield.

Leeds Mail Centre was extended in two locations and underwent significant internal alterations to improve mail sorting efficiency. The Mail Centre remained operational throughout construction works.

With its major extension of 5,800 sq.m. the works at Leeds Mail Centre saw the largest expansion of the three consolidated North East Mail Centres. The existing internal areas of the building underwent extensive remodelling and reorganisation of the mail sorting equipment.

Watson Batty was the lead designer for the project from the initial planning stages to the completion of works on site. We also worked closely with the Mail Centre operators to finalise the internal operational layout to achieve a maximum mail sorting efficiency.

The operational areas of the Mail Centre remained live during the building works. Watson Batty led on the phasing strategy that was agreed between Royal Mail and Wates Construction to overcome the logistical challenges of working in this busy environment.

The works at Leeds Mail Centre won the Royal Institute of Chartered Surveyors ‘Pro-Yorkshire’ Award in 2013 in the Infrastructure category. This award recognised the joint efforts of the client, contractors and design team to deliver this challenging scheme in an operational environment.

The Royal Mail North East Strategy won two prizes at the Association for Project Safety National Awards in 2013, namely CDMC of the Year and the Regional Award. These awards recognise projects with an outstanding and innovative approach to Health & Safety.



Above: Leeds Mail Centre, Leeds, Royal Mail Group

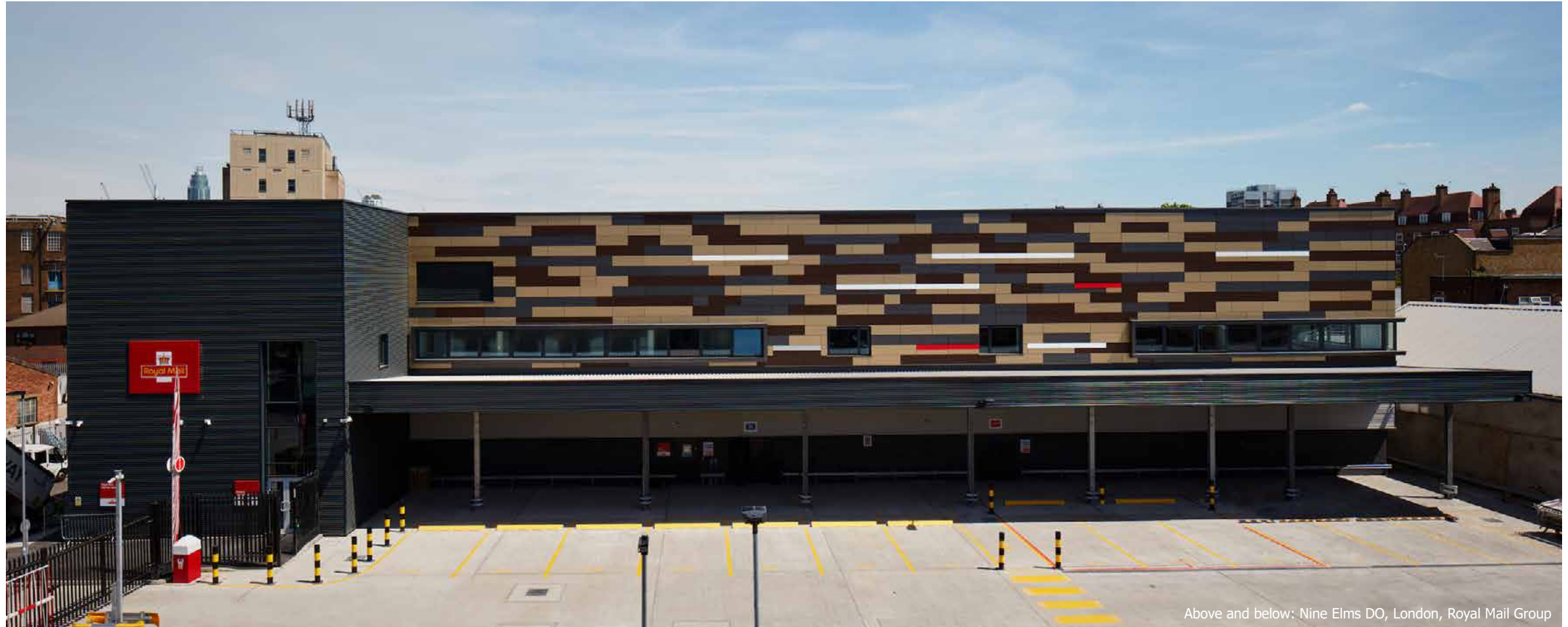
Nine Elms Delivery Office, London

Watson Batty Architects worked on behalf of the successful contractor VolkerFitzpatrick to deliver a new build delivery office in the centre of London for The Royal Mail Group.

Replacing the existing facilities which are just under a mile away in Vauxhall, Nine Elms Delivery Office will provide new space for over 100 postal routes and associated letter sorting machines. The facility sorts mail according to the route locations for the final phase of the delivery process.

The scheme which includes a new 5,100sq.m Delivery Office, Vehicle Service Centre and multi deck car park was completed in June 2017.

Constructed to BREEAM Excellent standard the project delivers the highest standards of sustainable design integrating features such as LED lighting and Photovoltaic panels. The design uses different materials from grey brick, high pressure laminate and Trespa cladding to break up the mass of the building.



Above and below: Nine Elms DO, London, Royal Mail Group



"Watson Batty have been a great addition to our team. Their forward-thinking, practical approach towards design and detail has been a great asset to the project, successfully delivering our end goal".

Phil Ellis, Divisional Director, Bowmer + Kirkland

“Having worked with Watson Batty for a number of years on various projects we find their service very reliable and professional. I would highly recommend them to any Client requiring a complete design service.”

Nigel Stirland, Project Manager, Kier Capital Projects



This page and opposite leaf: Northwest Parcelforce Hub, Chorley, Royal Mail Group



Northwest Parcelforce Hub, Chorley

Parcelforce Worldwide is the world's largest delivery network, reaching 99.6% of the world's population. Creating a large and efficient North West Hub at Chorley is a strategic investment by Royal Mail, to substantially increase the organisation's nationwide capacity – key to the organisation's future success. And, not surprisingly, it all had to be completed before the Christmas postal stampede.

The building comprises 44 large loading docks that link directly to the mechanisation and parcel movement systems contained within the building. The site also features a separate two-storey office block, housing welfare, office and administration facilities.

Our team were essential to the project from feasibility to completion.

With the immovable deadline in mind, the building shell was designed to be erected extremely quickly. It enabled the early installation of the mechanised conveyor while the rest of the works were completed. To protect mail items from the external elements, full-length canopies cover the loading areas. And, as part of its heating strategy, the building uses SolarWall: a maintenance-free, solar air heating system that heats ventilation air and improves overall air quality.

The resulting state-of-the-art facility, completed in September 2013, can process an incredible 12,000 parcels an hour. Sustainability-wise, it achieved a BREEAM rating of 'Very Good'. The project also won several awards, including the RICS North West Commercial Project of the Year and a key International Safety Award.



Royal Mail, South Midlands Mail Centre

The Royal Mail required a new, highly automated mail processing centre to serve the South Midlands region, incorporating the latest sorting technology.

For us, it was a project of two halves. Firstly, to review the design of the shell by the developer's team, and, secondly, to be the lead consultant for the fit-out stage.

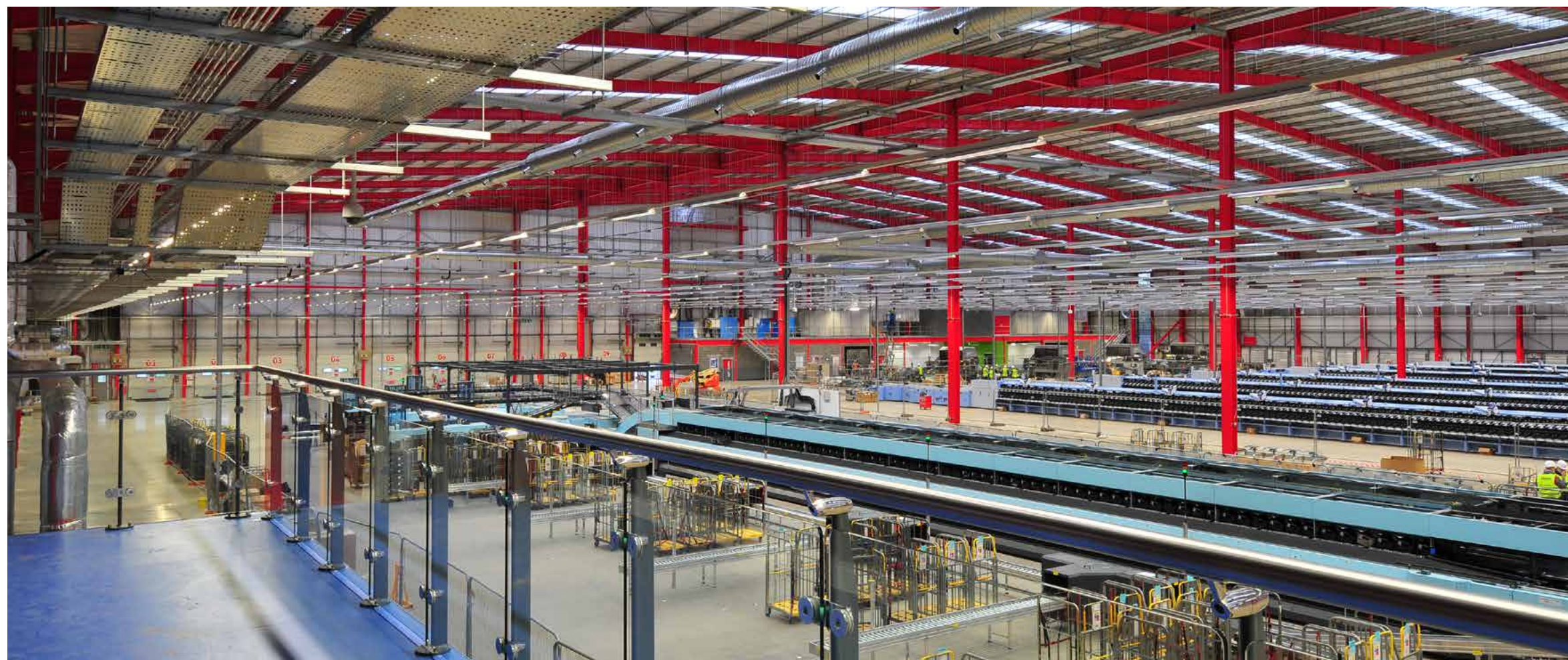
To ensure the design was operationally efficient and would meet Royal Mail Group's processing requirements, we worked closely with their operation and automation teams. Consequently, this facility has elevated the standard for all subsequent Mail Centres.

In terms of sustainability, this new facility leaves similar building types behind. It incorporates some key elements that significantly reduce energy consumption and carbon emissions, including Solarwall, biomass boilers, rainwater harvesting and a solar thermal hot water system. Should Royal Mail ever vacate the building, the 12 m clear eaves height and floor slabs that take high-bay racking loads provide the necessary flexibility for future occupiers.

This advanced Mail Centre achieved a BREEAM 'Excellent' Rating and won the Green Apple Award for the Built Environment in 2010. Being one of the most energy efficient properties in the Royal Mail's portfolio, it sets the environmental standard, not only for all future mail centre developments, but for the industry as a whole. The recently completed Medway Mail Centre was designed using the standards established here.



Above and below: South Midlands Mail Centre, Northampton, Royal Mail Group

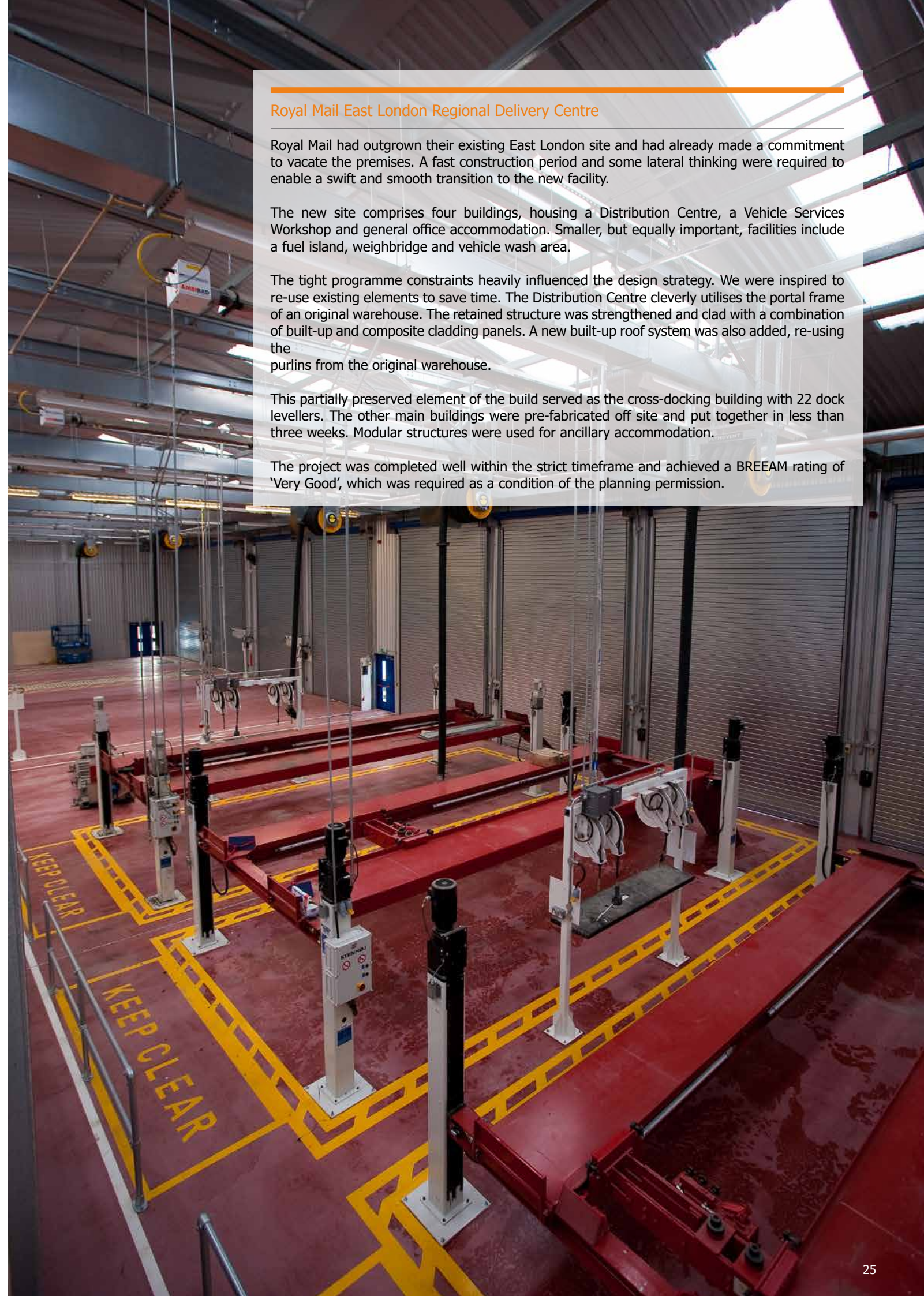


"Watson Batty are a practical organisation and are always able to discuss and evaluate alternative options to meet client requirements."

Alan Smith Hill, Head of Infrastructure Estate,
Royal Mail Group Property



This page and opposite leaf: Northwest Parcelforce Hub, Chorley, Royal Mail Group



Royal Mail East London Regional Delivery Centre

Royal Mail had outgrown their existing East London site and had already made a commitment to vacate the premises. A fast construction period and some lateral thinking were required to enable a swift and smooth transition to the new facility.

The new site comprises four buildings, housing a Distribution Centre, a Vehicle Services Workshop and general office accommodation. Smaller, but equally important, facilities include a fuel island, weighbridge and vehicle wash area.

The tight programme constraints heavily influenced the design strategy. We were inspired to re-use existing elements to save time. The Distribution Centre cleverly utilises the portal frame of an original warehouse. The retained structure was strengthened and clad with a combination of built-up and composite cladding panels. A new built-up roof system was also added, re-using the purlins from the original warehouse.

This partially preserved element of the build served as the cross-docking building with 22 dock levellers. The other main buildings were pre-fabricated off site and put together in less than three weeks. Modular structures were used for ancillary accommodation.

The project was completed well within the strict timeframe and achieved a BREEAM rating of 'Very Good', which was required as a condition of the planning permission.



Marsh Lane Refuse Depot, Tottenham

Watson Batty Architects are acting as lead for the architectural elements and technical design on the construction of a new Council Depot at Marsh Lane for the London Borough of Haringey. Replacing the former dilapidated facilities at Ashley Road, the project will include the formation of a new Workshop building along with associated parking, storage, fuel and vehicle wash.

The project is split into two phases due to a current council operation on site with the first phase including the construction of the vehicle parking area and the second phase the workshop and offices. The new workshop will provide modern facilities for repairing and maintaining the vehicle refuse fleet whilst an area of public electrical vehicle charging is also included in the scheme.

Creating a new workshop on this site allows the council to redevelop the old site located at Ashley Road into a housing development.

Initial building challenges arising was the presence of HV cables running through the site which the team negotiated with UKPN to build over and the need for a new entrance onto the site to be formed which required highways work.

Past attempts at the project had failed due to being consistently over budget but the design team called upon their experience in dealing with projects of a similar nature and interrogated the brief to come up with a viable solution. They were successfully able to reduce overall costs and bring the design within a strict budget. The scheme, which has solar PVs and a battery storage system on site, will achieve BREEAM Very Good.

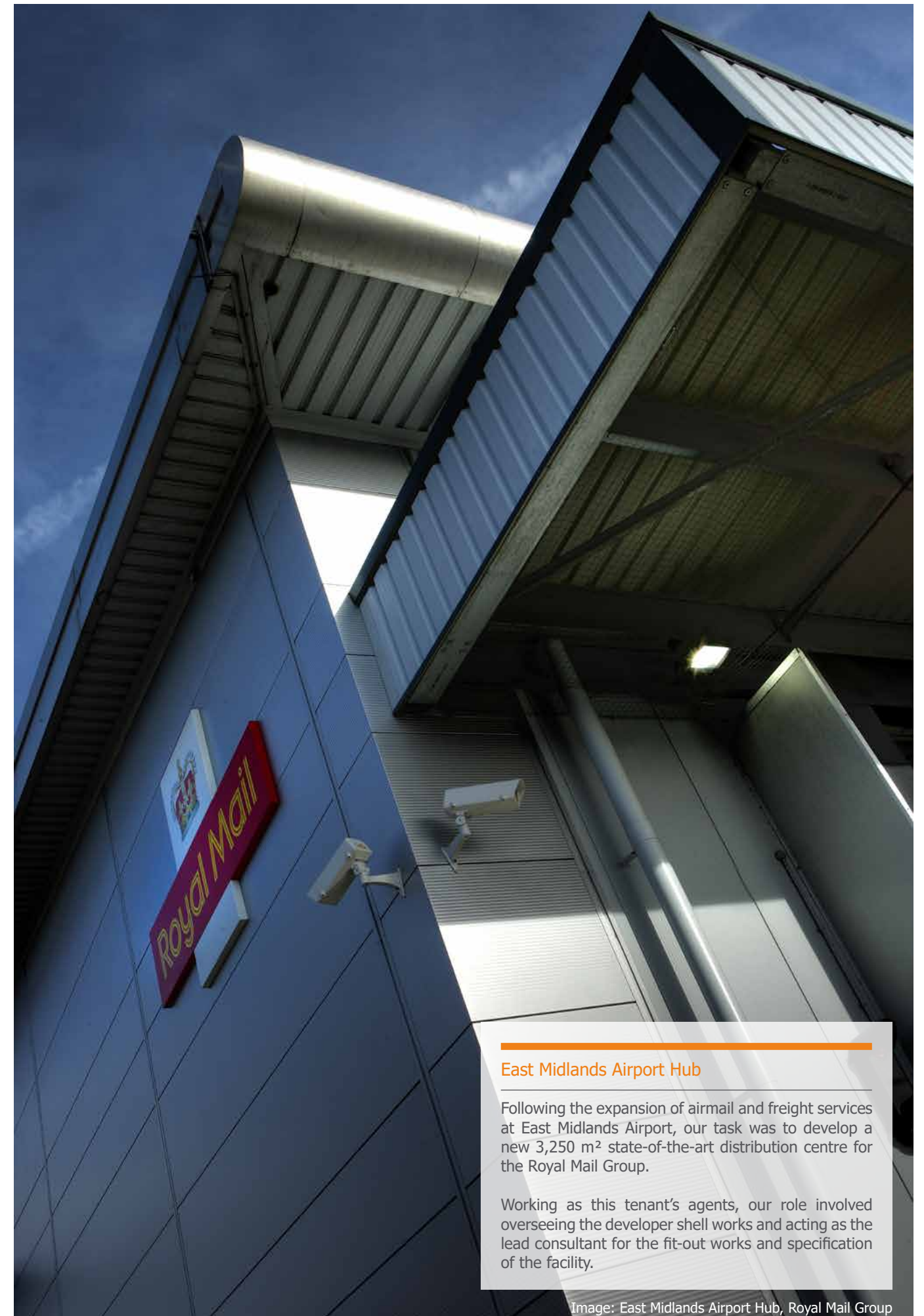
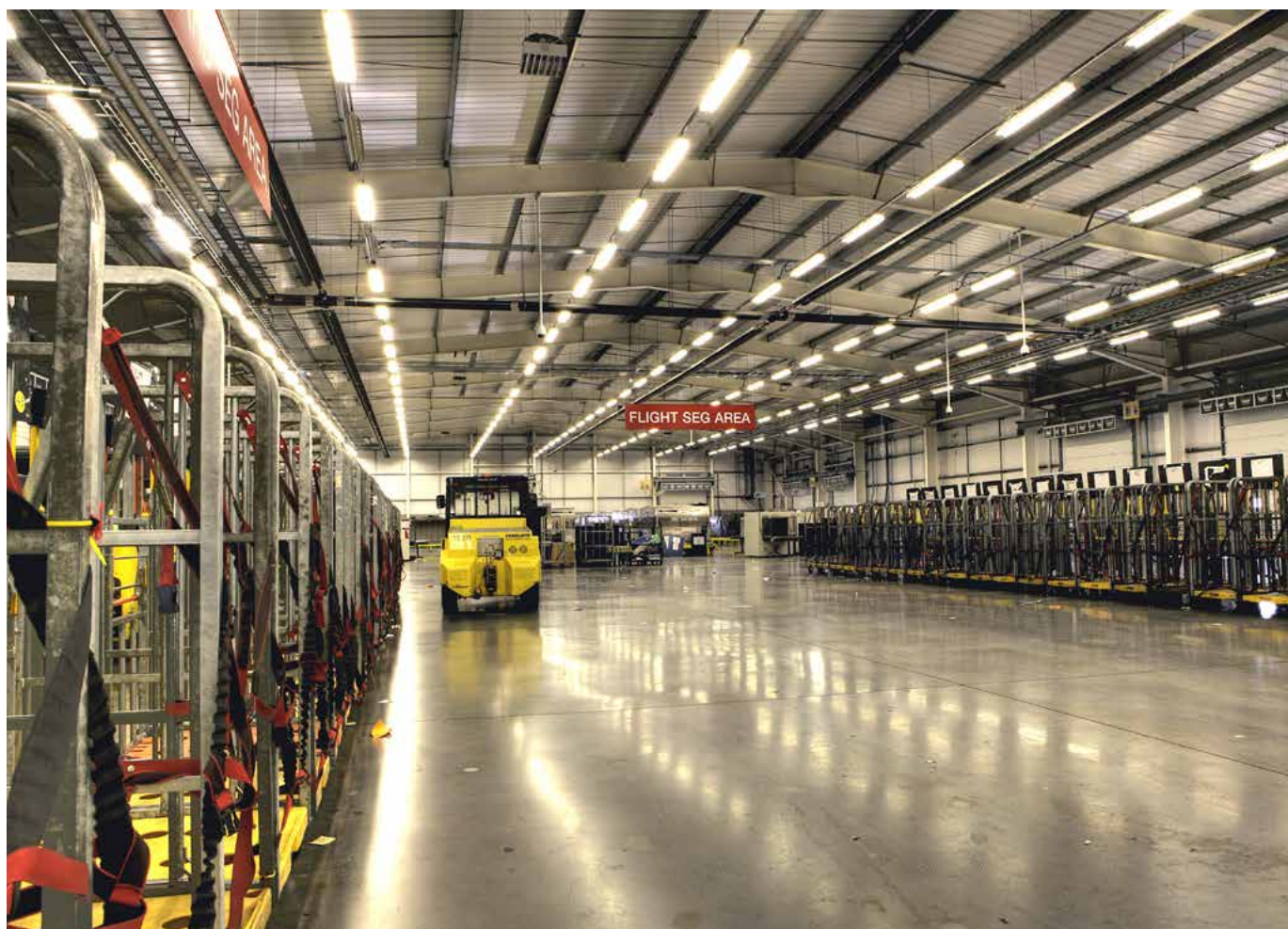


This page and opposite leaf: Marsh Lane, Tottenham, London Borough of Haringey



"The building is superb and everyone is happy working there, there is such a relaxed atmosphere around the place now. It has the WOW factor with all our visitors so a job well done. A BIG thank you!"

Sarah Percival, Office Manager, JBA Consulting



East Midlands Airport Hub

Following the expansion of airmail and freight services at East Midlands Airport, our task was to develop a new 3,250 m² state-of-the-art distribution centre for the Royal Mail Group.

Working as this tenant's agents, our role involved overseeing the developer shell works and acting as the lead consultant for the fit-out works and specification of the facility.

Image: East Midlands Airport Hub, Royal Mail Group



Kirklees Vehicle Services Workshop

Kirklees Council required a new vehicle services workshop, providing badly-needed maintenance and repair facilities for their fleet.

From the smallest van to the largest refuse collection wagon, this substantial new build facility accommodates the council's entire range of service vehicles. The workshop area itself incorporates extensive services provision at each vehicle bay position, a light goods MOT area and two fully accessible maintenance pits. Ancillary offices and staff welfare facilities are housed within the same building.

From bid to completion, we partnered with ISG; them as main contractor and us as design and build consultant.

As is often the case, in such builds, the fleet's operations had to continue non-stop throughout the construction period, resulting in a highly complex programme and a phased development over 18 months. The steeply sloping site provided another challenge, requiring detailed phasing studies to be developed in collaboration with the client, contractor and CDM co-ordinator.

Overall, our design proposals added value in construction buildability, efficient space planning, alternative sustainable design solutions and material specifications.



Manufacturing

Delivering successful projects within the food production and food manufacturing sector for nearly 20 years, Watson Batty Architects have a track record second to none.

Working with one of the United Kingdom's largest food producers we have experience of planning new build factories as well as the programming of intricate alteration works and complex machinery installations, mainly carried out within live factory environments.

Our team of qualified technical staff have a practical approach, capable of dealing with any situation and have developed a keen understanding of the requirements of food production buildings as well as a detailed knowledge of the processes that are contained within. We can call on a wealth of knowledge in relation to Mechanical, Electrical, Refrigeration and Sprinkler services and are experienced in the detailed coordination process of their installation.

Innovative solutions form a key element of what Watson Batty Architects do and we are currently investigating the use of alternative power sources for existing plants.

"Their positive, flexible and proactive approach together with their ability to create successful and professional working relationships has undoubtedly added to the success of the project."

Ged Simmonds, Project Director, Laing O'Rourke Construction North



Image Rathbone's Bakery Rebuild, Wakefield, Wm Morrison Supermarkets Plc and R N Wooler & Co. Ltd



This page and opposite leaf: Farmers Boy, Bradford, Wm Morrison Supermarkets Plc

Farmers Boy, Bradford

Now covering over 190,000 sq.ft, Farmers Boy has been manufacturing and marketing fresh food products on the current site in Bradford since the new building, designed by Watson Batty Architects.

Thanks to knowledge and expertise that has been gained, Watson Batty Architects have subsequently been involved in numerous extensions and internal alterations all aimed at increasing the efficiency and product lines the manufacturer can offer, whilst never affecting production. We have an intimate knowledge of the manufacturing process contained within.

Other projects include: North factory extension, including internal alteration works to the pie department, an office extension, and numerous extensions and modifications to allow the incorporation of various new food production lines.

The south factory extension was recently constructed to house a new quiche line capable of a through put of 7000 quiches per hour, taking the product from uncooked to priced and packaged in one manufacturing line.

A Waste to Energy installation is the latest project being undertaken on site. Utilising the waste bi-products of the manufacturing process elsewhere within the business, the installed plant will be capable of providing enough power/heat for the whole factory.





Above and below: Rathbone's Bakery Rebuild, Wakefield, Wm Morrison Supermarkets Plc and R N Wooler & Co. Ltd

"We have found them to be able to meet our technical needs, whilst being very thorough and practical in their approach to the work. They are able to span many of the different types of properties we have in our portfolio."

Alan Smith Hill, Head of Infrastructure Estate,
Royal Mail Group Property



Rathbone's Bakery Rebuild, Wakefield

July 3rd 2016 saw a catastrophic fire that raised an existing section of the bread factory to the ground. Watson Batty Architects have subsequently been closely involved with developing the buildings specification, submitting a planning application and then developing construction information for the construction works.

Building on their detailed knowledge of food production buildings and their long term working relationship with the client organisation WBA have been key to delivering this building to a tight programme and to budget.

Liaising directly with the Client WBA have produced detailed room data sheets and have played a fundamental role in the coordinated installation of the specialist equipment at the end of the project ensuring that all services etc. are available as required.

Dr Oetker, Leyland

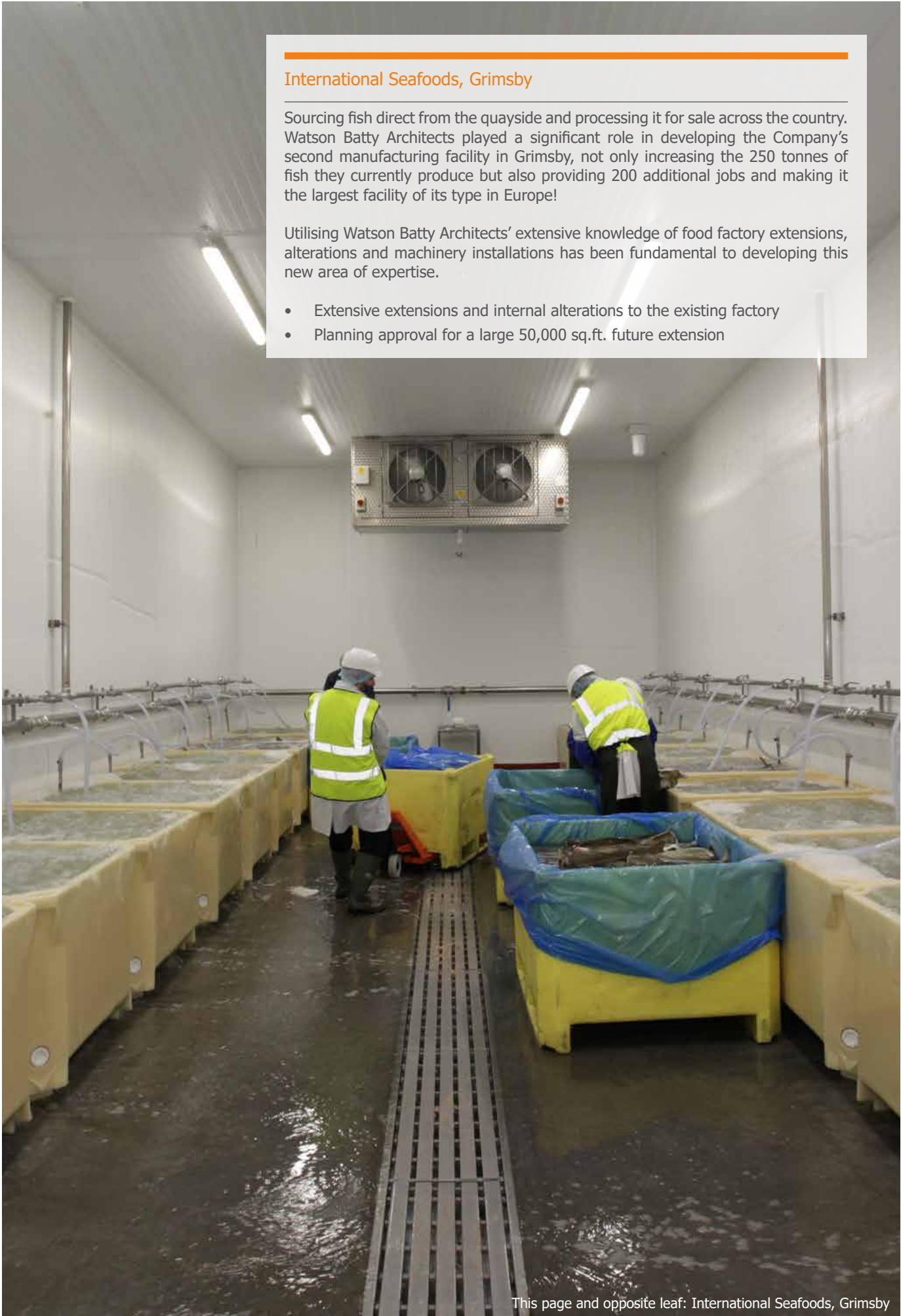
As part of their future planning and capacity expansion, Dr Oetker are building a 17,000 sq.ft new cold store facility for the storage of incoming goods, including chilled and frozen storage areas.

Watson Batty Architects have been able to demonstrate their specialist knowledge of chilled and frozen food facilities to deliver this complex build, particularly in relation to construction in a live site.



This page and opposite leaf: Dr Oetker, Leyland







Asset Management

Constructing a building is a major investment for most companies, however handing over the keys is only one small step in the life time of a project.

At Watson Batty we have experience of working together with clients to understand how their buildings are functioning, where improvements can be made to improve operational effectiveness and developing a life cycle programme for how they should be maintained going forward.

Working with clients we have developed strategies for large scale refurbishment to ensure buildings continue to look and perform how intended. We have integrated the latest building services in terms of energy efficiency as part of the review to lower building running costs and to deliver long term sustainable benefits.

We have experience of reviewing sites including, brownfield and contaminated, where the previous use of the land is no longer required and the potential value of the asset can be increased by developing and unlocking any future potential.

“Their Designers listened, considered and where appropriate challenged to fully understand, develop and answer the project brief.”

Ged Simmonds, Project Director, Laing O'Rourke

Image: OneSubsea, Stourton Site Redevelopment



This page and opposite leaf: Royal Mail - Mail Centre Uplift Programme

Royal Mail - Mail Centre Uplift Programme

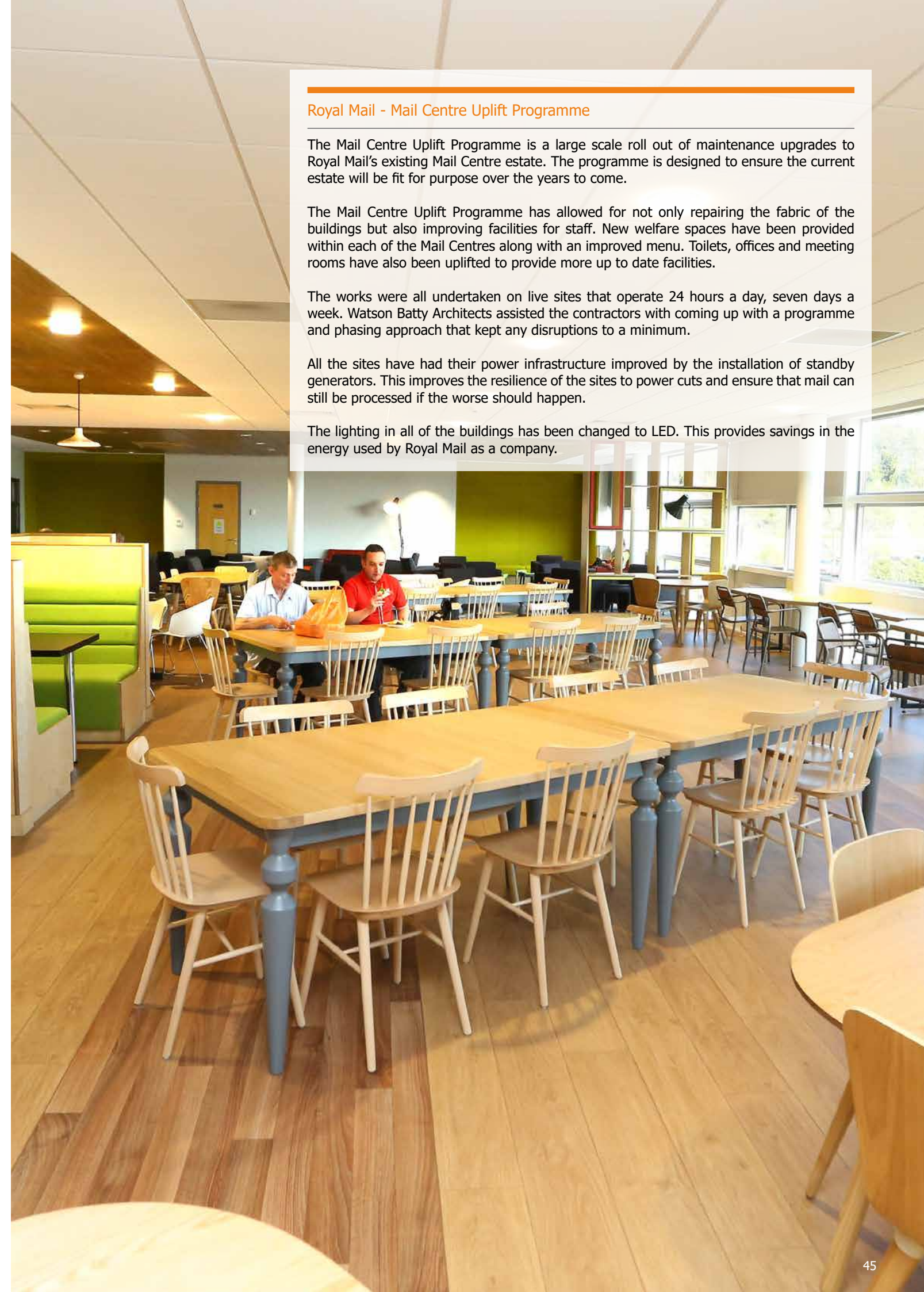
The Mail Centre Uplift Programme is a large scale roll out of maintenance upgrades to Royal Mail's existing Mail Centre estate. The programme is designed to ensure the current estate will be fit for purpose over the years to come.

The Mail Centre Uplift Programme has allowed for not only repairing the fabric of the buildings but also improving facilities for staff. New welfare spaces have been provided within each of the Mail Centres along with an improved menu. Toilets, offices and meeting rooms have also been uplifted to provide more up to date facilities.

The works were all undertaken on live sites that operate 24 hours a day, seven days a week. Watson Batty Architects assisted the contractors with coming up with a programme and phasing approach that kept any disruptions to a minimum.

All the sites have had their power infrastructure improved by the installation of standby generators. This improves the resilience of the sites to power cuts and ensure that mail can still be processed if the worse should happen.

The lighting in all of the buildings has been changed to LED. This provides savings in the energy used by Royal Mail as a company.



OneSubsea, Stourton Site Redevelopment

A major site redevelopment and phased internal refurbishment works for OneSubsea's, the Oil and Gas industry client, manufacturing facility in Stourton, Leeds. The project continued a relationship that started 25 years ago when Watson Batty Architects were the Architects for the office block and factory extension.

Working closely with OneSubsea to explore options for maximising the potential of the site, Watson Batty Architects lead an extensive feasibility exercise that explored all options for development of the site.

OneSubsea remained in the office accommodation while the remainder of the site was redeveloped which necessitated the demolition of part of the existing manufacturing plant. As the project progressed Watson Batty Architects used their experience gained on working in live environments to successfully agree the phasing of the works to minimise disruption.

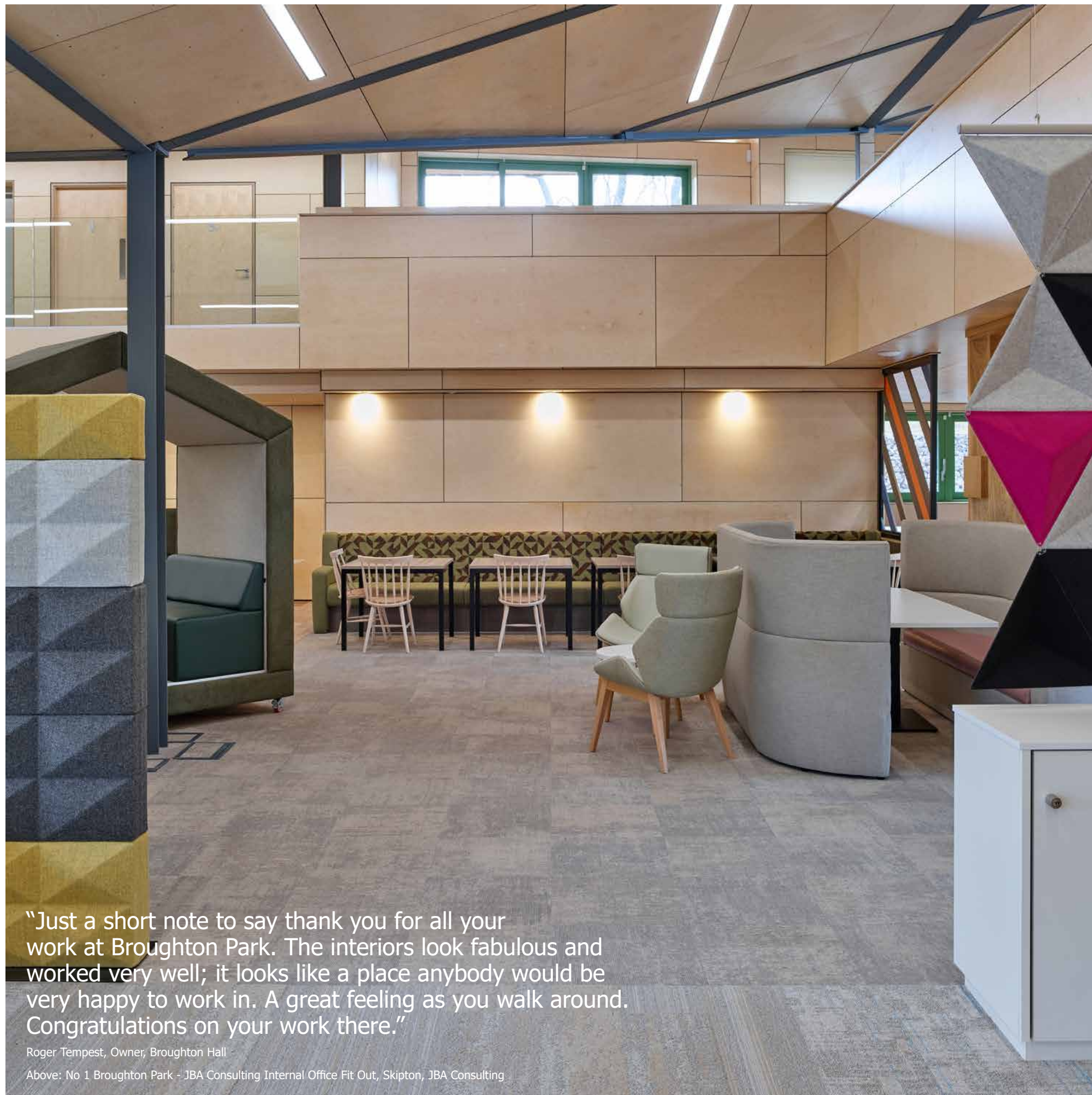
The works consisted of decommissioning the factory works on site to develop new carparking and section off land for development. A major part of these phases was to form a new canteen area, new conference facilities along with a new reception and refurbishment of existing office areas. Both phase 1: canteen and phase 2: Office Refurb completed in 2018.

"We are especially pleased with the quality and design levels that we have delivered, which we believe will set a new standard for our future developments."

Gert-Jan Peeters, Director, Pelikaan Construction



Above: OneSubsea, Stourton Site Redevelopment



Interior Design

The discipline of architectural practice feeds into our interior design artistry, inspiring schemes that marry functionality with aesthetics and complement the built structure.

Augmenting our architectural practice, our interior design service spans preparation of initial concepts to installation and covers furniture, finishes, materials, lighting and graphics. Our experience is wide-ranging, from enhancing period features in Listed properties to devising robust, functional spaces for industrial new-builds. Each project is tailored to its unique requirements, and we work closely with clients to explore exciting but viable solutions.

In business environments, we can articulate a corporate identity to ensure brand consistency, as well as reinforcing brand values by triggering the right emotional responses. Where budget is an issue, we can create affordable solutions with a wow factor through research and innovative thinking. In places of work, public use and learning, collaboration with Facilities Maintenance departments is invaluable in understanding the needs of end-users. Contemporary spaces demand constant monitoring of creative trends, especially when it comes to choosing environmentally friendly materials, the use of which we advocate wherever possible.



Project Management

"We continuously strive to challenge and improve the way our projects are delivered"

Watson Batty Architects are corporate members of the Association for Project Management with a number of our staff individual members of the Association for Project Management.

We continuously strive to challenge and improve the way our projects are delivered, not only in terms of quality of design, but also in the efficiencies of delivery, and Project Management is at the core of this.

Project management is the discipline of initiating, planning, executing, controlling, and closing the work of a team to achieve specific goals and meet specific success criteria. We accept that the only way to demonstrate performance to meet the success criteria is to measure it and compare it, and project Key Performance Indicators (KPIs) are the main driver of this.

Our Project Management service involves the cycle of planning, implementing, control and monitoring. This process has been effectively used throughout the practice on previous Frameworks.



Principal Designers

"We make health, safety and wellbeing a top priority as part of our core service to clients"

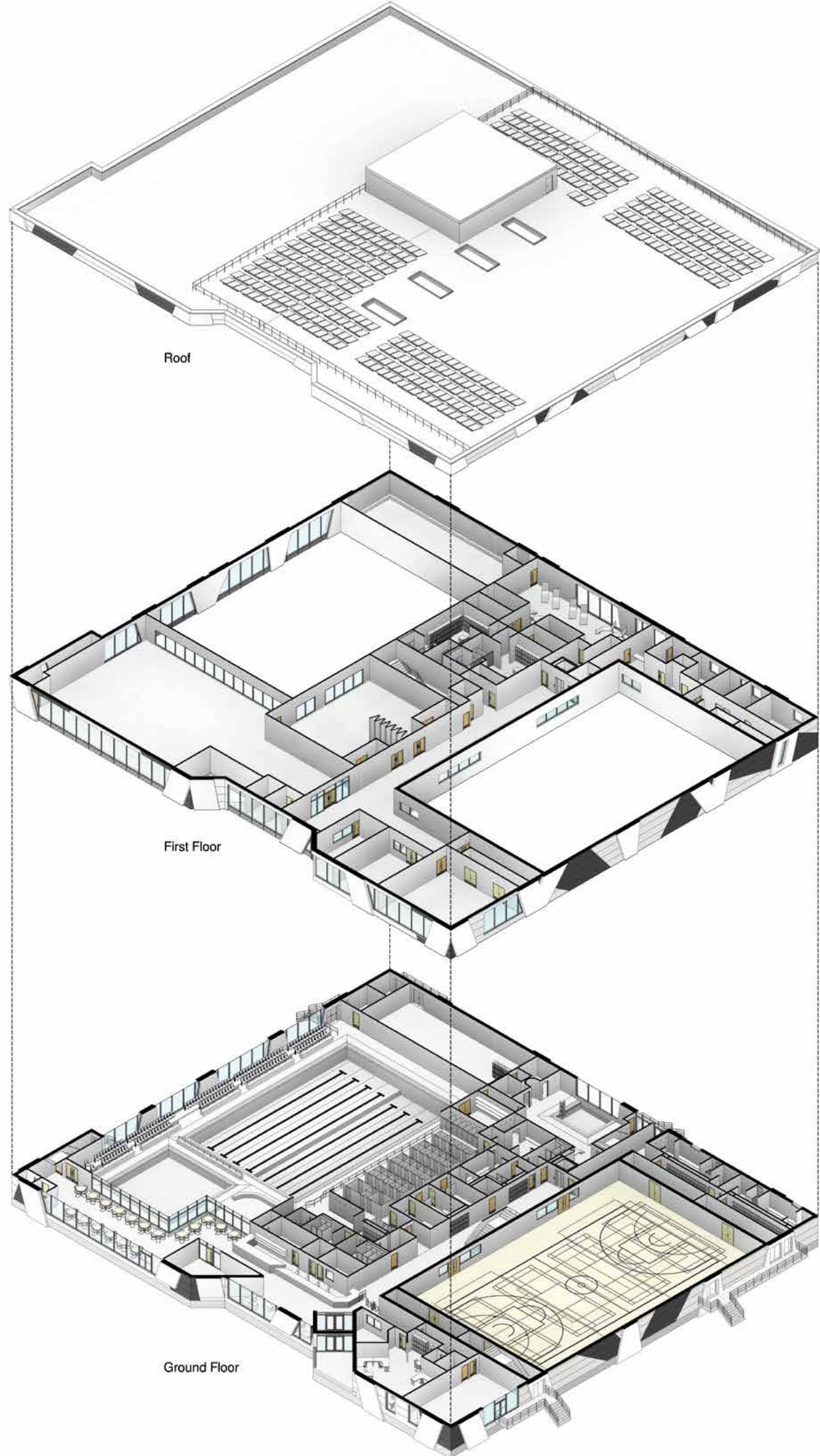
Watson Batty Architects has developed the necessary capabilities and resources to fulfil the role and responsibilities when carrying out the duties of Principal Designer under CDM 2015. Our systems have been updated to reflect the changes in the regulations.

All our staff who will be involved on the projects will have the required training, experience and knowledge to undertake the role of Principal Designer.

We make health, safety and wellbeing a top priority as part of our core service to clients; throughout the design process, within the office environment and when visiting construction sites.

We have made significant financial and time investment in all our staff and committed to appointing a dedicated in-house Health Safety and Wellbeing Advisor.





BIM

Building Information Modelling increases the efficiency of the design process and reduces the cost and quality risks associated with the building process.

To provide the very best service possible for our clients, we are constantly exploring new ways of working and reviewing the latest developments in technology.

Having identified the advantages of BIM back in 2011, we've embraced this evolving technology wholeheartedly. We have been Task Team certified by Stroma since 2018 and this was renewed in December 2020, allowing us to provide our clients with the assurance that we are aligned to working to a PAS 1192-2/ISO 19650 standard.

BIM enables us to generate elaborate virtual models that can be shared between all parties. The models contain digital objects that carry comprehensive information about the design, construction and operation of assets.

To begin with, it improves communication, benefiting both the practice and those we work with collaboratively. It also brings with it the inherent advantages of increasing the efficiency of the design process and reducing the cost and quality risks associated with the building process. And, by allowing visualisation and assessment of concepts and developments, it enhances creativity.



Images above: Logistics of the Future

"Graitec has supported Watson Batty for many years. We've always been available to react to their growing software needs and continue to give advice on the latest software developments in the industry."

Claire Merrick, Account Manager, Graitec

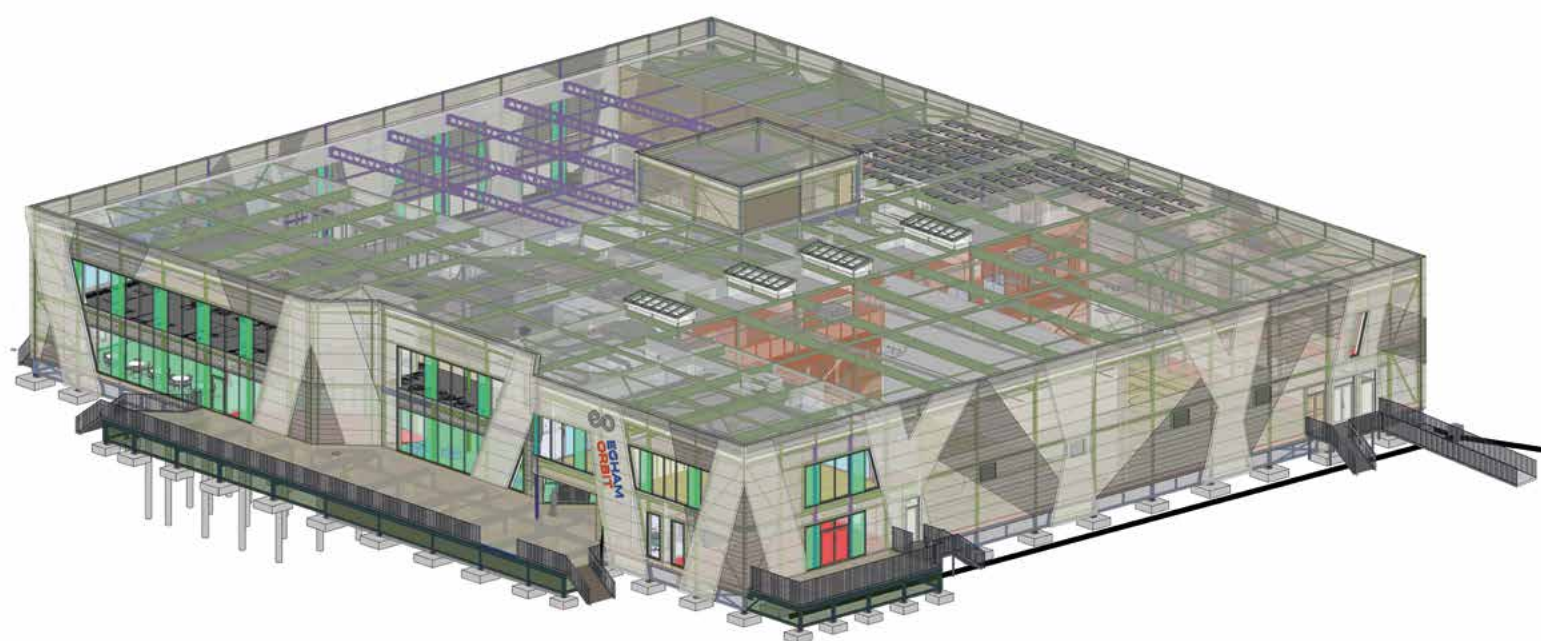


Image above and facing: Egham Orbit Leisure Centre

Modern Methods of Construction

The world of construction is changing quickly in response to new materials, building techniques, digital design and the need to provide immediate, high quality solutions to meet shortfalls in a number of key sectors. Including education, residential and care.

There are alternative and proven alternatives to 'traditional' forms of construction available to clients. Notwithstanding the ongoing need to carefully evaluate all available options and procurement routes during the early stages of a project, 'offsite' fabrication is rapidly becoming the default choice for a number of public and private sector organisations. It's not a completely new approach but is now founded on a very well informed, agile, innovative and highly skilled operation linked to exciting advances in digital design and collaborative project team environments like Building Information Modelling (BIM).

Essentially it's about pre-manufacturing, using modern methods of production to minimise on site construction. It also has the capacity to not only meet but exceed the requirements to deliver sustainable projects to respond to the climate crisis. In particular, through efficient use of resource, materials and transportation, high-end productivity, reduced waste and energy use, provide robust contemporary solutions that can help deliver circular economy and whole life carbon targets.

At Watson Batty Architects we're proud of being recognised as an innovative design practice but also as architects who know how to deliver technical, compliant, sustainable and safe to build and use projects. We're embracing the opportunities

and partnerships that 'offsite,' modern methods of construction (MMC) can provide. Recently we've delivered new airside schemes which incorporate tensile construction and offsite accommodation and we're currently helping deliver a new £18m academy school on the DfE MMC Framework.

Image: Internal view of 'offsite construction' sports hall at York St John University

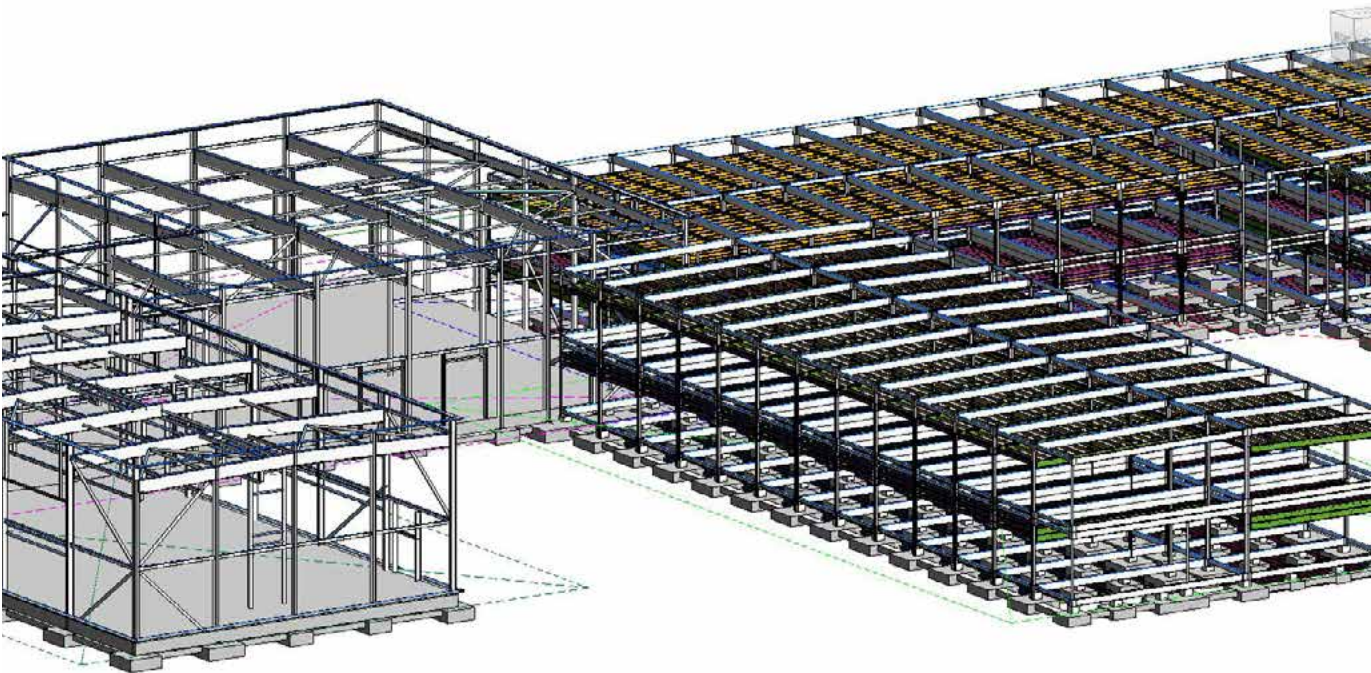


Image: 3D Revit view of a current project with Elliott Group – Part 'traditional' hybrid build and largely offsite two storey new build school



Image: Logistics of the Future

A Sustainable Future

The climate change emergency is the biggest challenge facing our planet.

Over 40% of the UK's carbon footprint is attributed to the built environment, with approximately half of this linked directly to the operational and embodied energy within buildings. At Watson Batty Architects, we recognise our key position and responsibility in helping to reduce further contributions to the causes of climate change. As a practice, we are being proactive through our actions within the ongoing design of buildings, to mitigate its impact and have signed up to the RIBA 2030 Climate Challenge. This directly addresses the operational energy use, embodied carbon, water consumption, land-use, biodiversity and health and wellbeing of new projects over the next 5- and 10-year periods.

We recognise the benefits to projects by engaging in this process and are actively reviewing the impact our designs and specifications have on these benchmarks, in order to better help our clients both, define and deliver their own sustainable outcomes going forward. Sustainable design requires a holistic approach, and we follow the key design principles of a fabric-first and robust solution, but also one tailored to each project to maximise the reductions in embodied carbon, minimise operational energy, water consumption and ongoing maintenance and therefore our clients' future costs.

This ethos resonates in our own office premises in Leeds. Designed by ourselves, the building was awarded the Green Apple Award in 2007 for its energy efficient and sustainable design approach. It includes geothermal heating and cooling systems, a rainwater recovery system, significantly reducing freshwater consumption, natural ventilation and makes extensive use of natural light.

The practice is experienced in environmental design and has successfully completed a number of projects in recent years that have achieved BREEAM certification, including 'Excellent' and 'Outstanding' ratings. It has also completed a Passivhaus certified development for the University of Bradford and we are currently developing a net zero carbon design for a new primary school in Nottingham for the DfE.

In addition to our other services, we can offer a sustainability co-ordination role to your project. Leading the design and project team as an enabler, coordinator, and ambassador to not only meet but exceed current and future building legislation and climate challenge targets aligned with the RIBA Plan of Work and Sustainable Outcomes Guide.



Quality Assurance

One of the first Architectural practices in the region to have a fully certified Quality system in the 1990s.

Quality is at the heart of everything we do as a practice and our system has been externally certified by BM TRADA for nearly 20 years. We are Quality Assured to BS EN ISO 9001:2015, obtaining our initial accreditation on 8th March 1994. Additionally, we are accredited to ISO 45001:2018 (Occupational Health and Safety Management) and to ISO 14001:2015 (Environmental Management).

The implementation of all projects and the delivery of Watson Batty's Architectural and Principal Designer services are all in accordance with our current Integrated Management System (IMS) which incorporates the above accreditations.

Our IMS procedures ensure that there is an agreed framework in place for project delivery from inception to completion to facilitate the consistent delivery of projects across the practice, ensuring that all our projects are delivered in the same

professional manner, regardless of size, scale or complexity. Experience has demonstrated that our IMS procedures are appropriate for all projects.

We were one of the first Architectural practices in the region to have a fully certified Quality system in the 1990s and then a fully integrated management system early in the 2000s, quickly realising the benefits that it brought to consistent project delivery and ultimately customer satisfaction.

Watson Batty Architects Ltd are certified to be Cyber Secure by the ECSC and hold the Cyber Essentials Certificate. This certification reinforces the fact that we are a secure practice, not only for our staff, but clients and potential clients, preventing us from potential cyber attacks from outside the organisation.



Corporate Social Responsibility

We strive to ensure our part in CSR is brought to the attention of our staff at all times.

As a practice, we recognise the importance of approaching Corporate Social Responsibility in a coordinated and committed manner to make a positive impact to our clients, the community, our partners and the environment.

Through our culture, our work in the community and both our environmental and ethical policies, we strive to ensure our part in CSR is brought to the attention of our staff at all times. We encourage the utmost efforts both as individuals and as a company to operate in an ethical manner, both currently and as a future focus of the practice.

The nature of our work makes our impact on the environment at the forefront of how we operate, and we subscribe to the concept of environmentally aware design, supporting the activities of the entire development team in meeting this

objective. Through our design approach we are committed to reducing the impact of our own activities on the environment and raising the awareness of this to our staff, external clients, subcontractors and suppliers. Furthermore, it is in our best interest to achieve client satisfaction and retention through a commitment to policies of good practice and service, and adhere to Statutory and Regulatory requirements in doing so.

Being future focused, we value diversity in the workplace and believe in caring for our employees and work experience students, encouraging continual learning and development opportunities across the business. As a firm, and as individual staff members, we understand the significant impact we can have on the community and are therefore dedicated to being a responsible contributing member of society both through financial and active support.

Contacts

Key Sector Contacts



Industrial & Distribution

Ben Pickersgill

E: ben.pickersgill@watsonbatty.com
T: 01943 876665
M: 07714 343236



Transport & Retail

Peter White

E: peter.white@watsonbatty.com
T: 01943 876665
M: 07974 414694



Sport & Leisure

Rima Yousif

E: rima.yousif@watsonbatty.com
T: 01943 876665
M: 07771 160077



Learning

Mark Sidding

E: mark.sidding@watsonbatty.com
T: 01943 876665
M: 07790 228291



Living

Richard Merrills

E: richard.merrills@watsonbatty.com
T: 01943 876665
M: 07967 567917



Specialist Living & Commercial

Andrew Grindrod

E: andrew.grindrod@watsonbatty.com
T: 01943 876665
M: 07974 414615



Midlands Studio

Richard Crowson

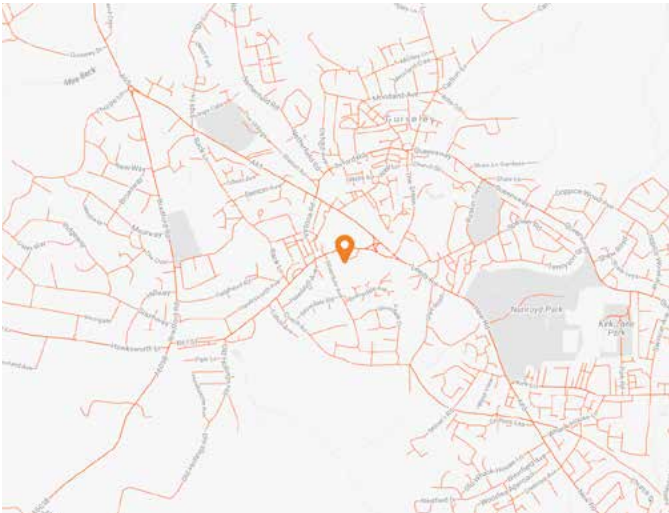
E: richard.crowson@watsonbatty.com
T: 01943 876665
M: 07540 501079



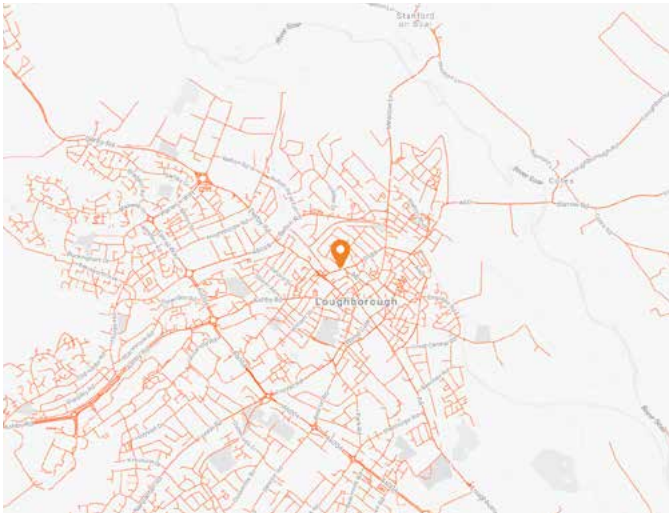
Locations

Leeds

Loughborough



Shires House
Shires Road
Guiselay
Leeds
LS20 8EU



Limehurst House
Bridge Street
Loughborough
Leicestershire
LE11 1NH



